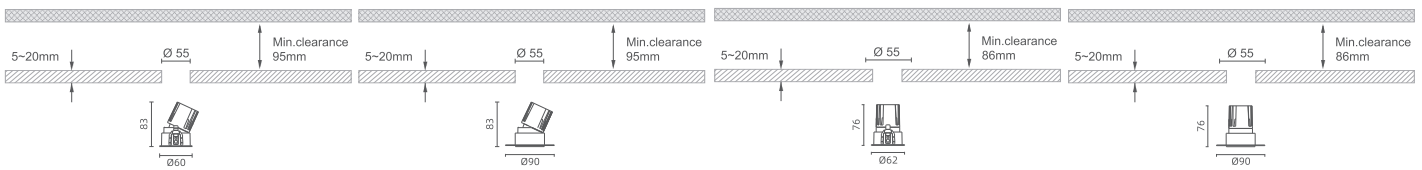
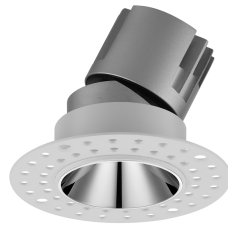


Venice T-1.1

Venice T-1.2



TR - Trim Adjustable

TS - Trimless Adjustable

TR - Trim Fixed

TS - Trimless Fixed

Venice T-I

EN

The CITIZEN LED 4.5W/6.5W/8W Architectural Lighting offers a powerful and efficient lighting solution with LED power ranging from 6.5W to 8W and system power from 7W to 9W. It provides LED outputs of 621lm to 822lm and system outputs of 371lm and 570lm. Available beam angles include 15°, 24°, 36°, and 50° for flexible illumination. The drive operates at 32V 200mA to 32V 250mA. The standard CCT ranges from 2700K to 6000K, with 3000K as the default. With CRI > 90, it ensures excellent color rendering. IP20 and IP54 ratings offer protection, and optional lenses provide optical solutions. Front rings come in white and black, while color reflectors are available in white, black, silver, and black chrome. E01-honeycomb louver, E02-spread, E03-diffusion and E04-clear lenses are for IP20 and IP54 optical protection levels.

IT

L'illuminazione architettonica CITIZEN LED 4.5W/6.5W/8W offre una soluzione di illuminazione potente ed efficiente con potenza LED che va da 6.5W a 8W e potenza del sistema da 7W a 9W. Fornisce uscite LED da 621 lm a 822 lm e uscite di sistema da 371 lm e 570 lm. Gli angoli del fascio disponibili includono 15°, 24°, 36° e 50° per un'illuminazione flessibile. L'azionamento funziona da 32 V 200 mA a 32 V 250 mA. Il CCT standard varia da 2700K a 6000K, con 3000K come impostazione predefinita. Con CRI > 90, garantisce un'eccellente resa cromatica. I gradi di protezione IP20 e IP54 offrono protezione e le lenti opzionali forniscono soluzioni ottiche. Gli anelli anteriori sono disponibili in bianco e nero, mentre i riflettori colorati sono disponibili in bianco, nero, argento e cromo nero. Le lenti a nido d'ape E01, le lenti E02-spread, E03-diffusion e E04-clear sono per i livelli di protezione ottica IP20 e IP54.

Reference: System Power - Output Lumen - Delivered Lumen - Beam Angle

Venice T-1.1	B681	7W - 621lm - 371lm - 15°	B682	7W - 621lm - 419lm - 24°	B683	7W - 621lm - 456lm - 36°	B684	7W - 621lm - 375lm - 50°
	B685	9W - 822lm - 463lm - 15°	B686	9W - 822lm - 524lm - 24°	B687	9W - 822lm - 570lm - 36°	B688	9W - 822lm - 469lm - 50°
Venice T-1.2	B689	7W - 621lm - 371lm - 15°	B690	7W - 621lm - 419lm - 24°	B691	7W - 621lm - 456lm - 36°	B692	7W - 621lm - 375lm - 50°
	B693	9W - 822lm - 463lm - 15°	B694	9W - 822lm - 524lm - 24°	B695	9W - 822lm - 570lm - 36°	B696	9W - 822lm - 469lm - 50°

Mode	Finish	CCT/CRI		IP	Dim		Emergency	Colour (Reflector)	
TR Trim Version	W - WHITE	K1 - 2700K /90	K2 - 3000K /90	1 - IP20	A - On/Off	B - DALI	Y- Yes	W - WHITE	B - BLACK
TS Trimless Version	B - BLACK	K3 - 3500K /90	K4 - 4000K /90	2 - IP54	C - 0/1-10v	D - TRIAC	N- No	S - SILVER	BC - BLACK CHROME
		K5 - 5000K /90	K6 - 2700-6000K /90		E - BLUETOOT H	F - ZIGBEE			
					CASAMBI				

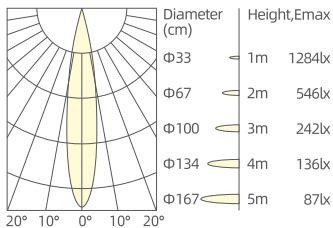
Code Example

A001 TA W K11 A Y

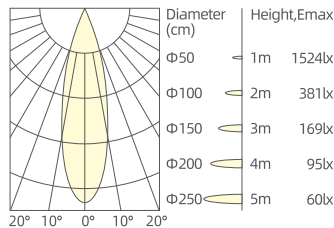
Enter Your Code:

CODE MODE FINISH CCT IP DIM EMERGENCY

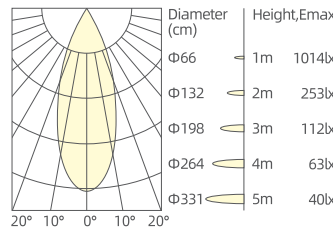
7W/15°/3000K/Ra90



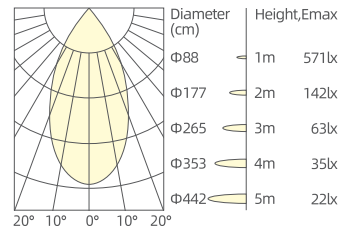
7W/24°/3000K/Ra90



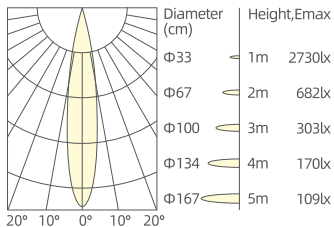
7W/36°/3000K/Ra90



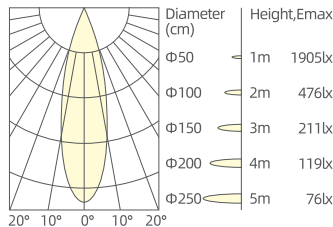
7W/50°/3000K/Ra90



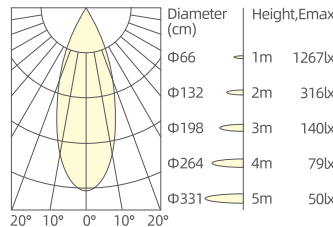
9W/15°/3000K/Ra90



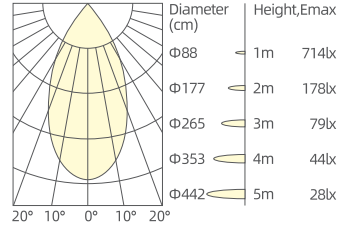
9W/24°/3000K/Ra90



9W/36°/3000K/Ra90



9W/50°/3000K/Ra90



Optical Accessories

- OR01** Honeycomb Louver
- OR02** Spread Lens
- OR03** Diffusion Lens
- OR04** Clear Lens

Colour(Reflector)

- White
- Black
- Silver
- Black chrome