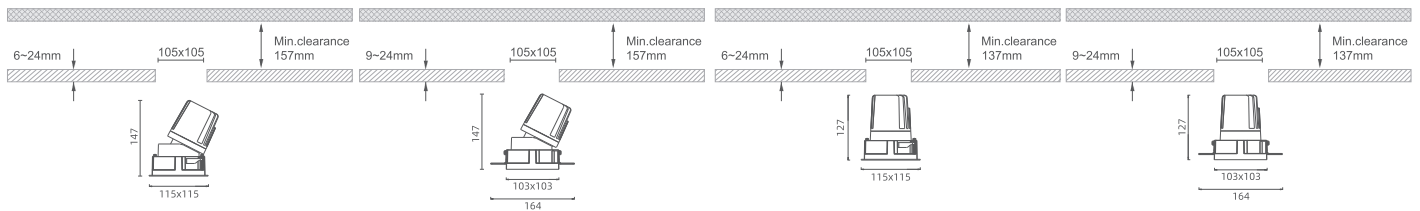
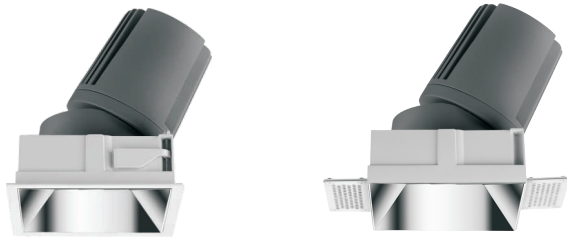


Venice T-11.1

Venice T-11.2



TR - Trim Adjustable

TS - Trimless Adjustable

TR - Trim Fixed

TS - Trimless Fixed

Venice T-XV

EN

The CITIZEN LED 18W/20.5W Architectural Lighting delivers superior illumination with LED power ranging from 18W to 20.5W, and system power between 20W to 25W. The LED output spans from 2343lm to 2569lm, while the system output ranges from 1346lm to 2064lm. Offering a range of beam angles (15°, 24°, 40°, and 55°), it operates with a drive of 34V 500mA to 34V 600mA. The fixture supports a CCT range from 2700K to 6000K, with a default of 3000K, and boasts a CRI > 90. It features standard control systems like On/Off, DALI, 0/1-10V, and TRIAC. Front rings are available in white and black, and the reflectors come in white, black, silver, and black chrome colors. E01-honeycomb louver, E02-spread, E03-diffusion and E04-clear lenses are for IP20 and IP54 optical protection levels.

IT

L'illuminazione architettonica CITIZEN LED 18W/20,5W offre un'illuminazione superiore con una potenza dei LED che va da 18W a 20,5W e una potenza del sistema tra 20W e 25W. L'uscita LED va da 2343 lm a 2569 lm, mentre l'uscita del sistema varia da 1346 lm a 2064 lm. Offrendo una gamma di angoli del fascio (15°, 24°, 40° e 55°), funziona con un azionamento da 34 V 500 mA a 34 V 600 mA. L'apparecchio supporta un intervallo CCT da 2700K a 6000K, con un valore predefinito di 3000K, e vanta un CRI > 90. È dotato di sistemi di controllo standard come On/Off, DALI, 0/1-10V e TRIAC. Gli anelli anteriori sono disponibili in bianco e nero e i riflettori sono disponibili nei colori bianco, nero argento e cromo nero. Le lenti a nido d'ape E01, le lenti E02-spread, E03-diffusion e E04-clear sono per i livelli di protezione ottica IP20 e IP54.

Reference: System Power - Output Lumen - Delivered Lumen - Beam Angle

Venice T-11.1	B914	20W - 2343lm - 1346lm - 15°	B915	20W - 2343lm - 1754lm - 24°	B916	20W - 2343lm - 1743lm - 40°	B917	20W - 2343lm - 1692lm - 55°
	B918	25W - 2569lm - 1585lm - 15°	B919	25W - 2569lm - 2064lm - 24°	B920	25W - 2569lm - 2051lm - 40°	B921	25W - 2569lm - 1992lm - 55°
Venice T-11.2	B922	20W - 2343lm - 1346lm - 15°	B923	20W - 2343lm - 1754lm - 24°	B924	20W - 2343lm - 1743lm - 40°	B925	20W - 2343lm - 1692lm - 55°
	B926	25W - 2569lm - 1585lm - 15°	B927	25W - 2569lm - 2064lm - 24°	B928	25W - 2569lm - 2051lm - 40°	B929	25W - 2569lm - 1992lm - 55°

Mode	Finish	CCT/CRI		IP	Dim		Emergency	Colour (Reflector)	
TR Trim Version	W - WHITE	K1 - 2700K /90	K2 - 3000K /90	1 - IP20	A - On/Off	B - DALI	Y- Yes	W - WHITE	B - BLACK
TS Trimless Version	B - BLACK	K3 - 3500K /90	K4 - 4000K /90	2 - IP54	C - 0/1-10v	D - TRIAC	N- No	S - SILVER	BC - BLACK CHROME
		K5 - 5000K /90	K6 - 2700-6000K /90						
H CASAMBI									

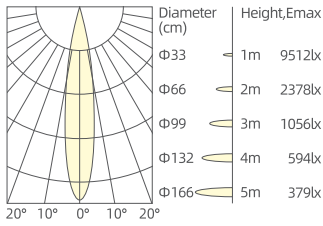
Code Example

A001 TA W K11 A Y

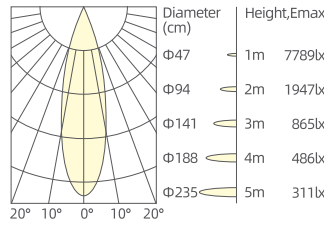
Enter Your Code:

CODE MODE FINISH CCT IP DIM EMERGENCY

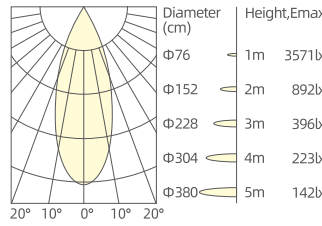
20W/15°/3000K/Ra90



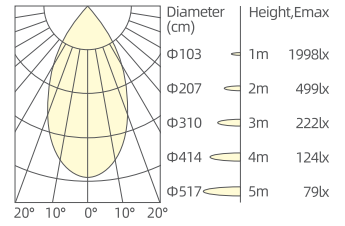
20W/24°/3000K/Ra90



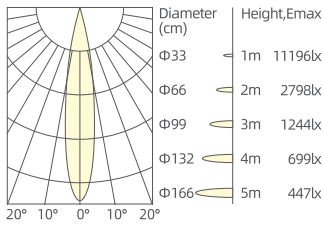
20W/40°/3000K/Ra90



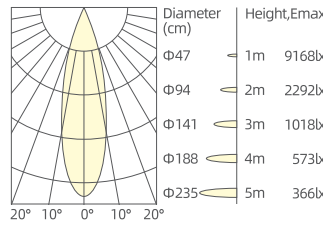
20W/55°/3000K/Ra90



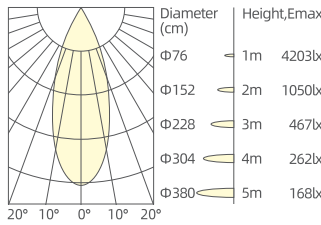
25W/15°/3000K/Ra90



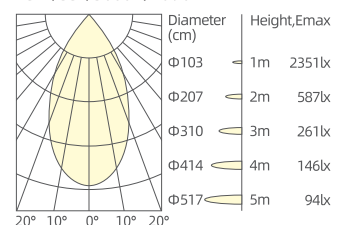
25W/24°/3000K/Ra90



25W/40°/3000K/Ra90



25W/55°/3000K/Ra90



Optical Accessories



Colour(Reflector)

